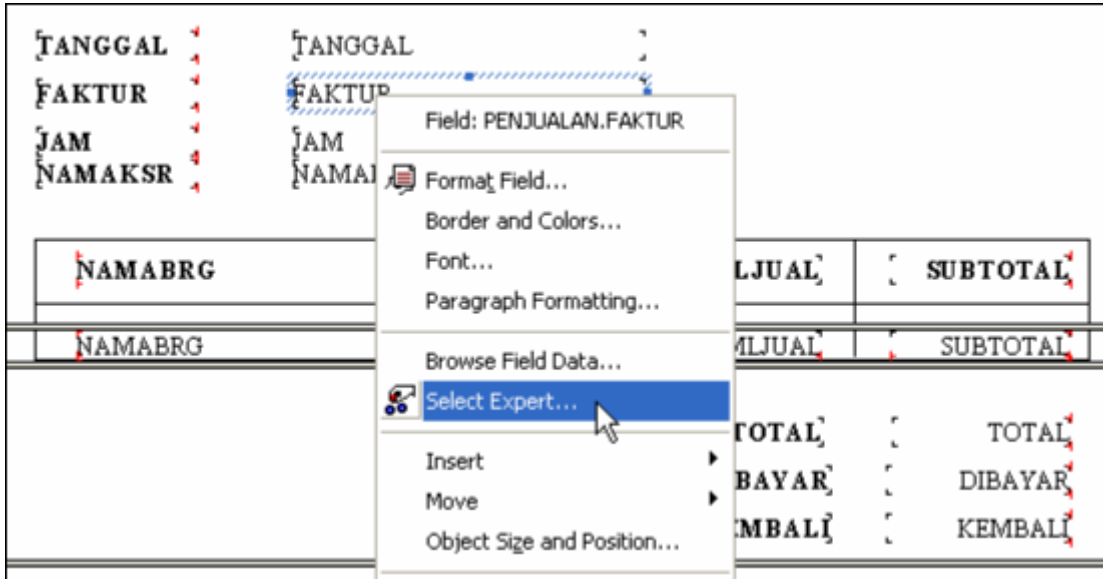


## Memanggil Faktor Terakhir

Buka file laporan

Klik kanan field Faktur

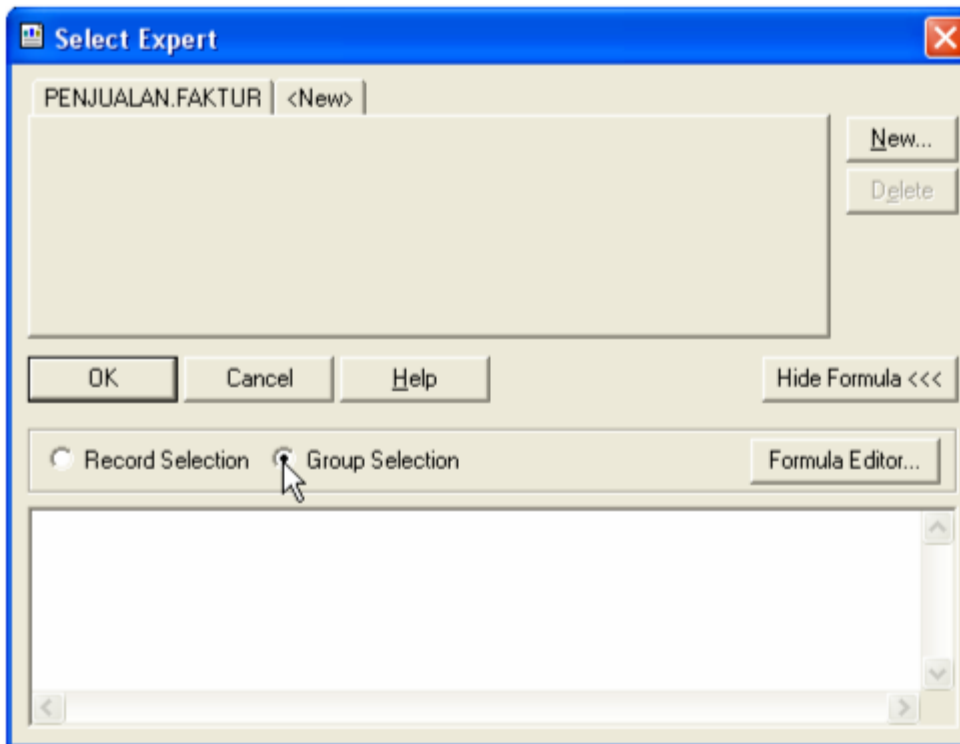
Pilih select expert



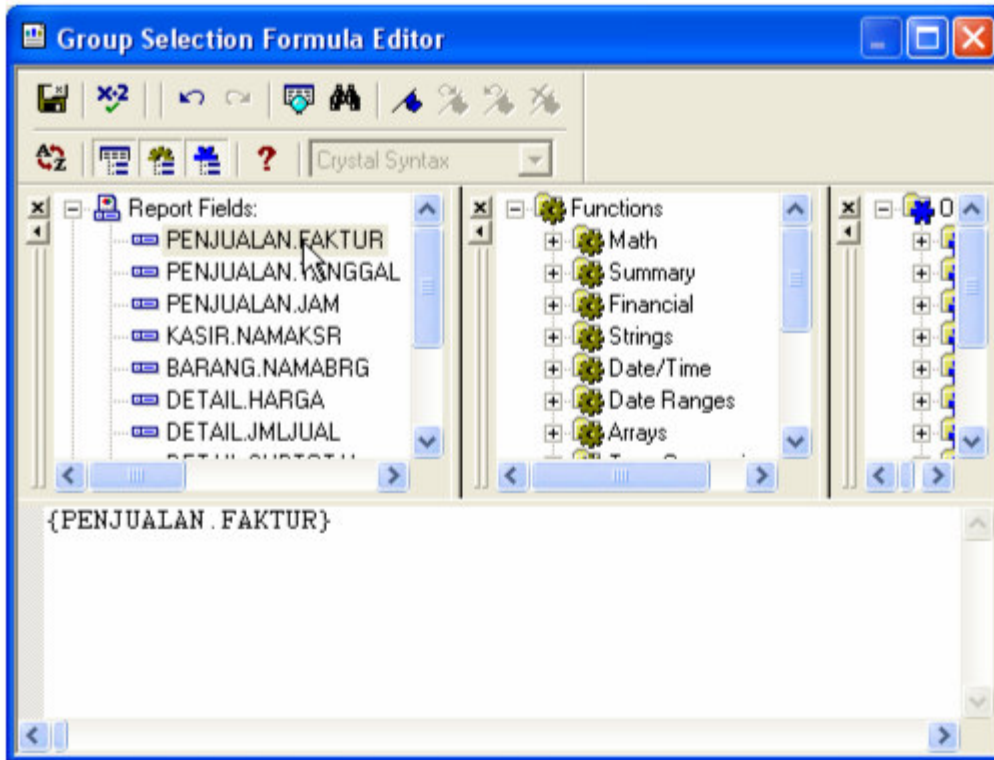
Klik show formula



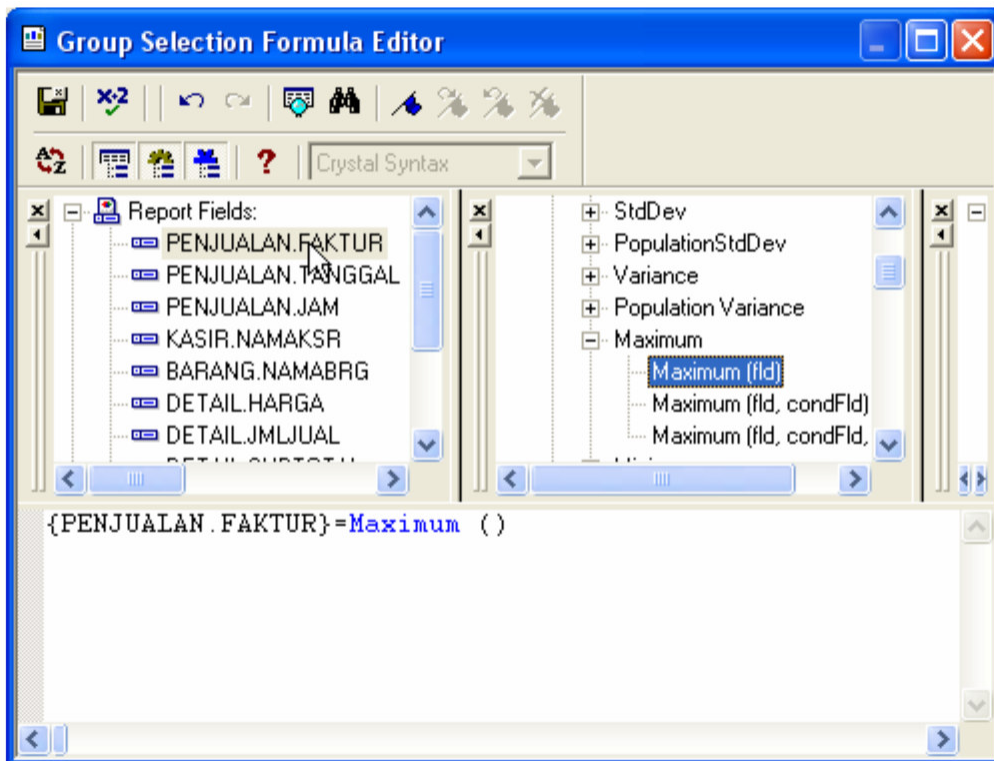
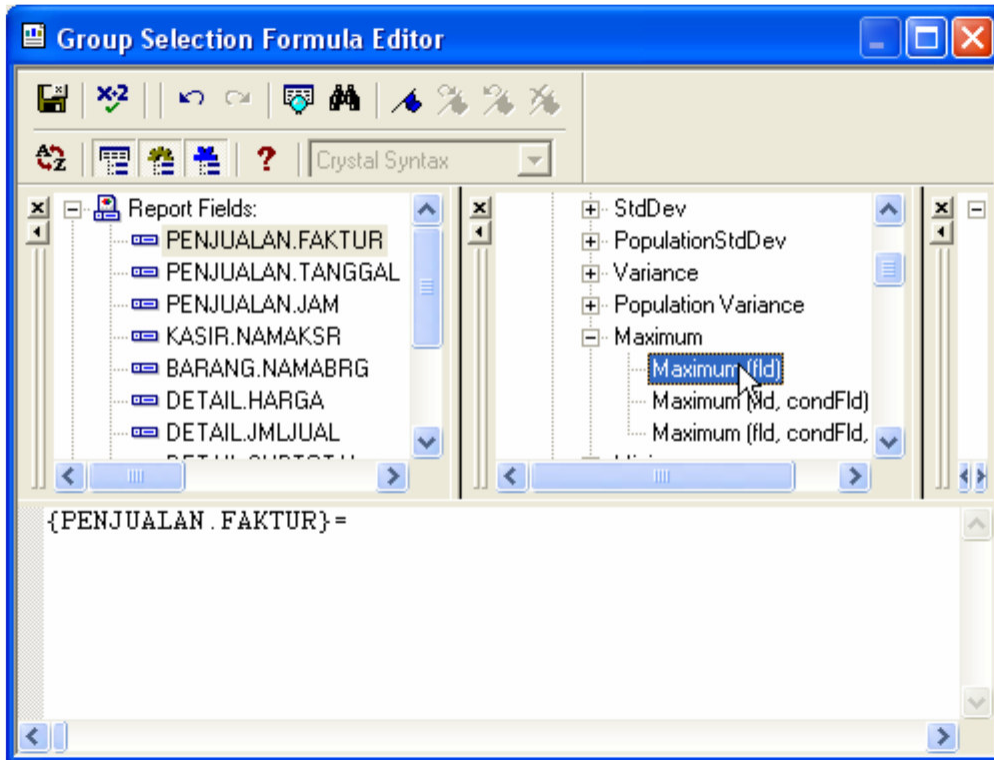
Klik group selection



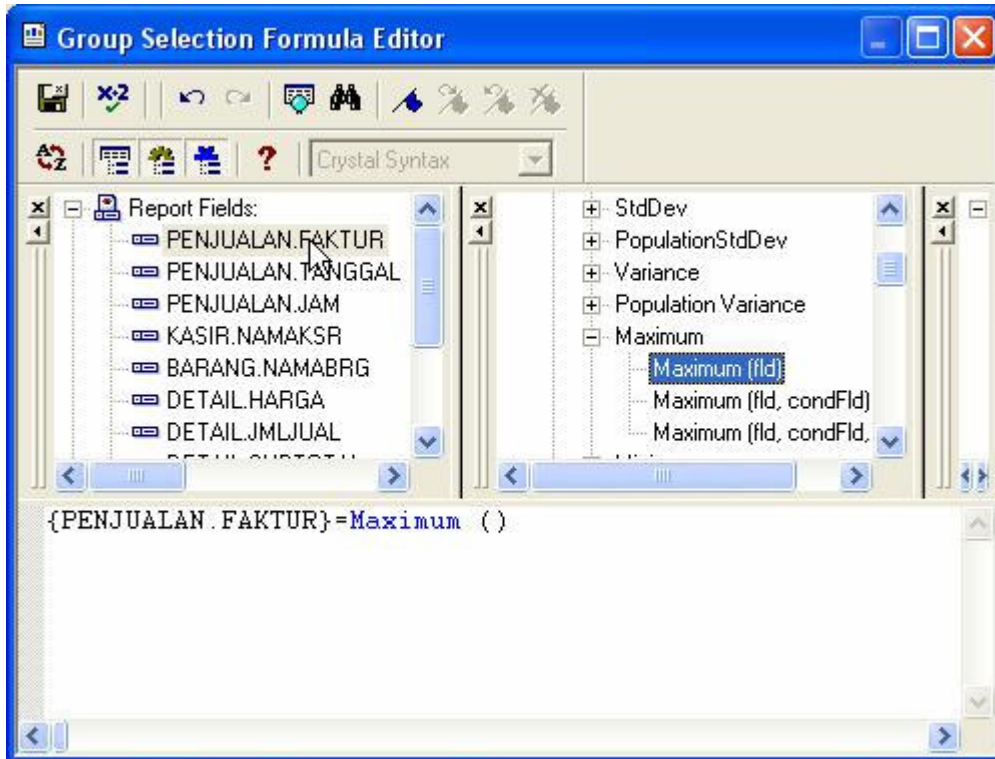
Klik formula editor  
Double klik penjualan.faktur



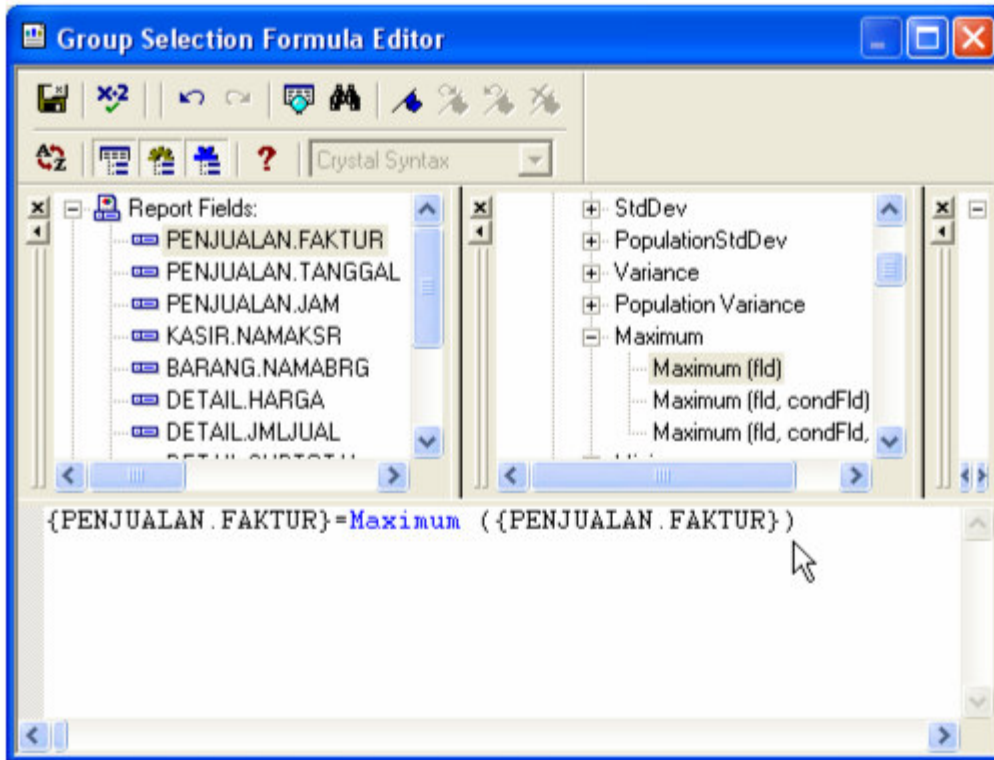
Ketik tanda = (sama dengan)  
Double klik maximum(fld)



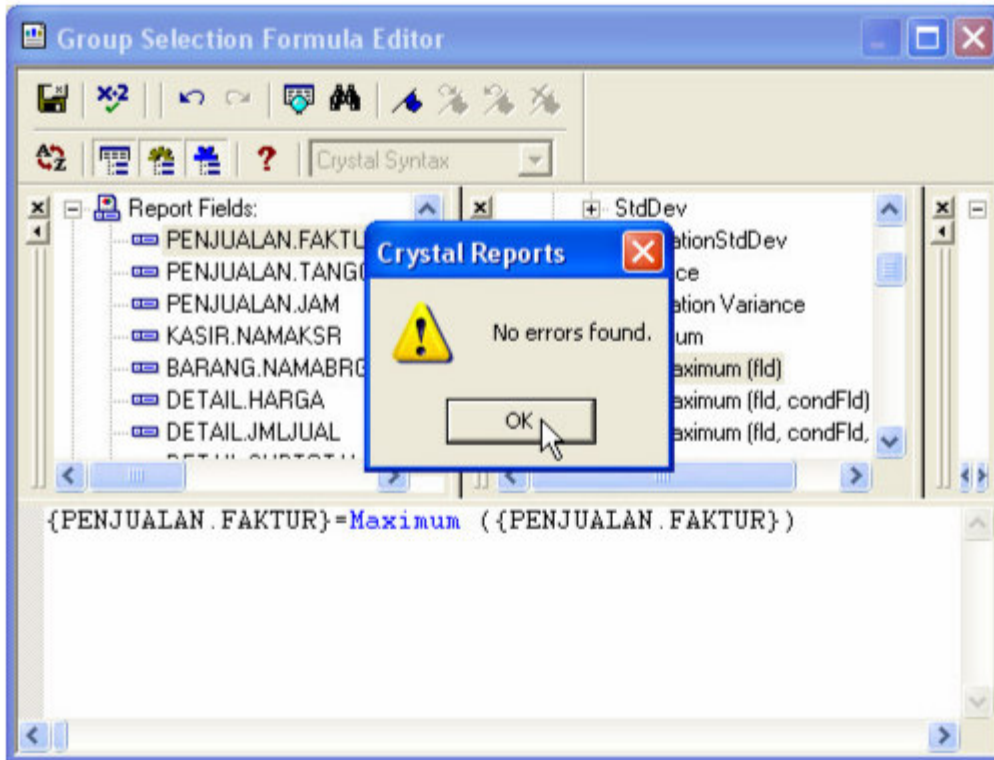
Double klik lagi penjualan.faktur



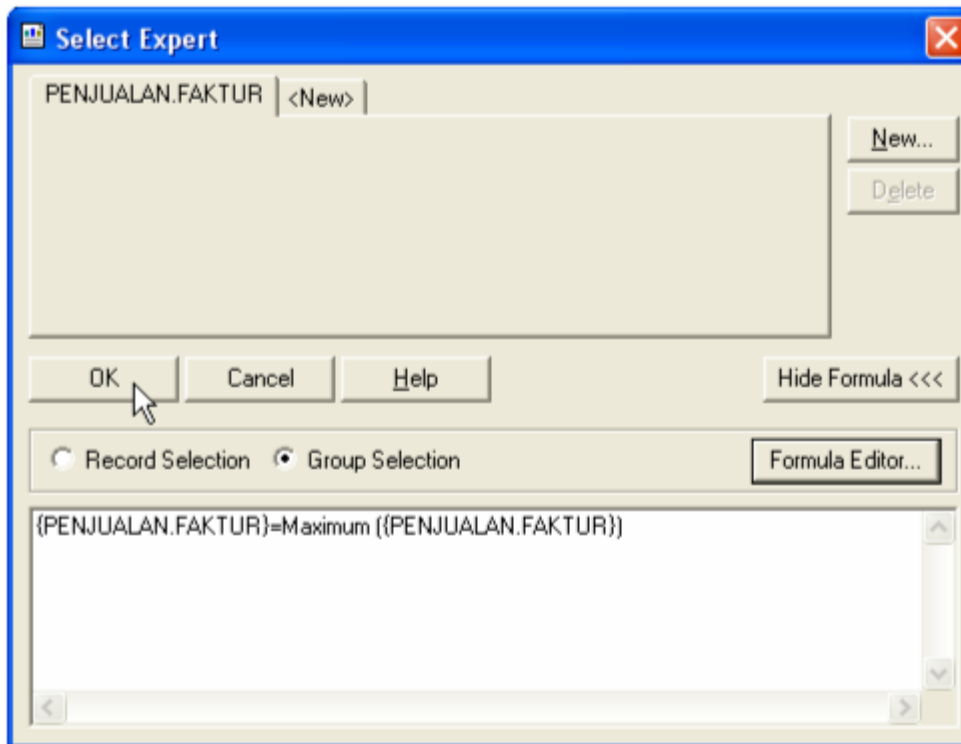
Hasil :



Klik ikon check



Klik save and close  
Klik OK



Simpan file laporan  
Jalankan program

Crystal report akan memanggil data paling akhir

Cara lain : boleh juga rumus ini diketik secara manual