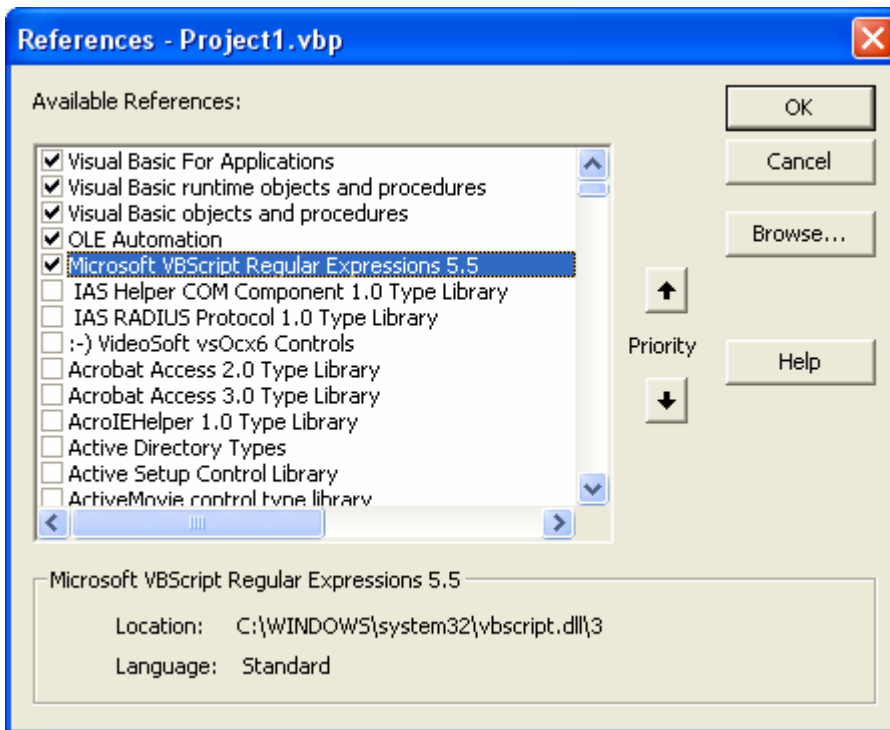
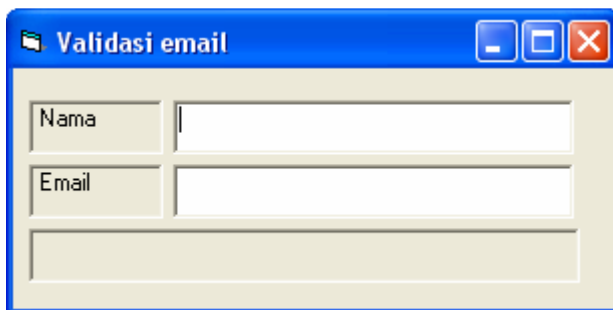


Pastikan anda telah menambahkan reference "microsoft vbscript regular expressions 5.5"

Klik menu project > references



Setelah itu buatlah form seperti gambar di bawah ini.



Coding :

```
Private Sub Text1_KeyPress(KeyAscii As Integer)
If KeyAscii = 13 Then Text2.SetFocus
End Sub
```

```
Private Sub Text2_KeyPress(KeyAscii As Integer)
If KeyAscii = 13 Then
    Set coba = CreateObject("VBScript.RegExp")
    coba.IgnoreCase = True
    coba.Pattern = "^[\\w-\\.]+@\\w+\\.\\w+$"
    coba = coba.Test(Text2.Text)
    If coba = True Then
        Text2 = Text2.Text
        Label3 = "email benar"
        Text2.BackColor = vbWhite
    Else
        Text2.SetFocus
        Label3 = "email salah"
        Text2.BackColor = vbRed
    End If
End If
End Sub
```