

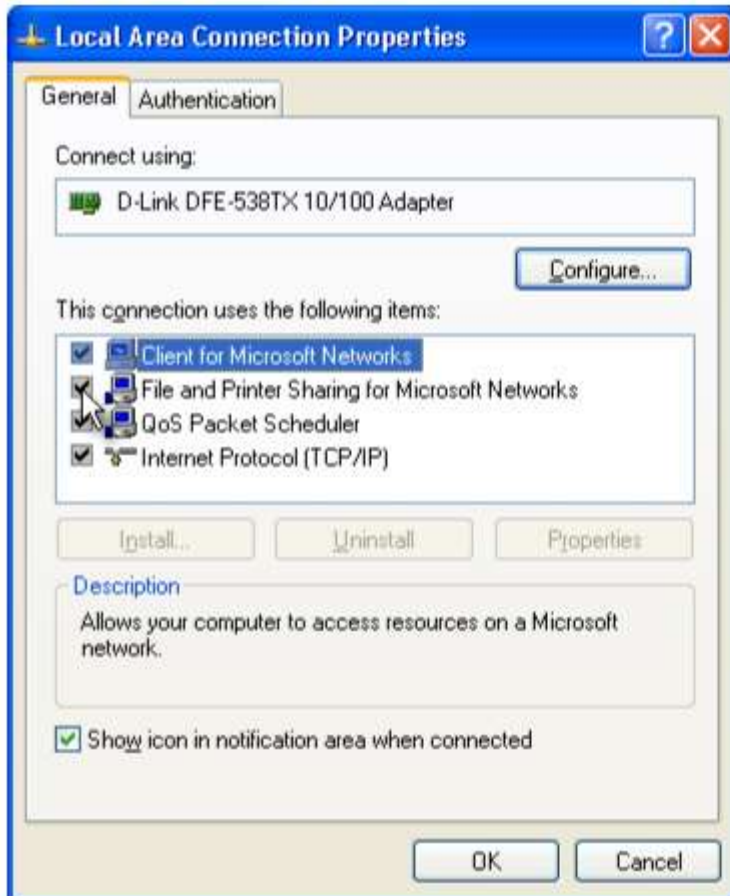
Database Access untuk Multi User

Mengaktifkan file dan printer sharing

1. Aktifkan **CONTROL PANEL** di server
2. Double klik **NETWORK CONNECTION**
3. Klik kanan **LOCAL AREA CONNECTION**



4. Pilih **PROPERTIES**
5. Aktifkan **FILE AND PRINTER SHARING FORM MICROSOFT NETWORK**
6. Klik **OK**



Membuat Sharing Direktori Di Server

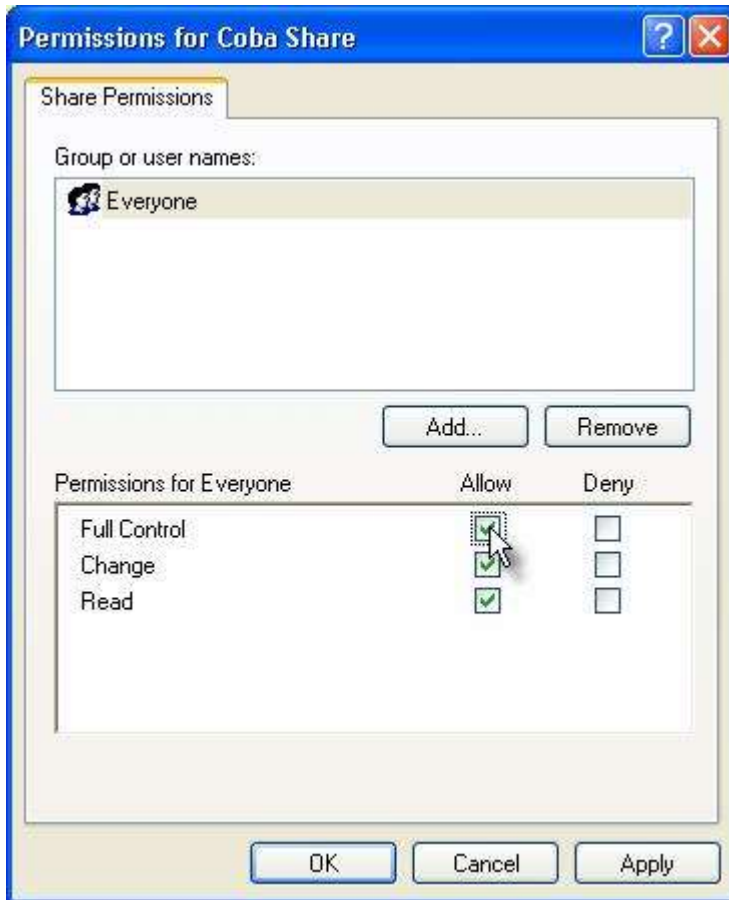
1. Buka **WINDOWS EXPLORER**
2. Klik kanan folder tempat menyimpan database (**COBA SHARE**)
3. Pilih **SHARING AND SECURITY**



4. Pilih **SHARE THIS FOLDER**



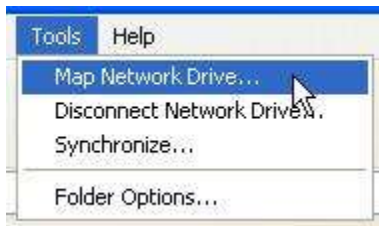
5. Klik **PERMISSIONS**
6. Aktifkan opsi **ALLOW** pada opsi full control



7. Klik **APPLY > OK**
8. Klik **APPLY > OK**

Membuat Mapping Database Server Di Client

1. Aktifkan **WINDOWS EXPLORER**
2. Klik **MENU TOOLS**
3. Klik **MAP NETWORK DRIVE**



4. Klik **BROWSE**



5. Klik **TANDA +** di sebelah kiri Bina Insani



6. Cari folder di server tempat menyimpan database (**COBA SHARE**)



7. Klik **OK**
8. Klik **FINISH**

